

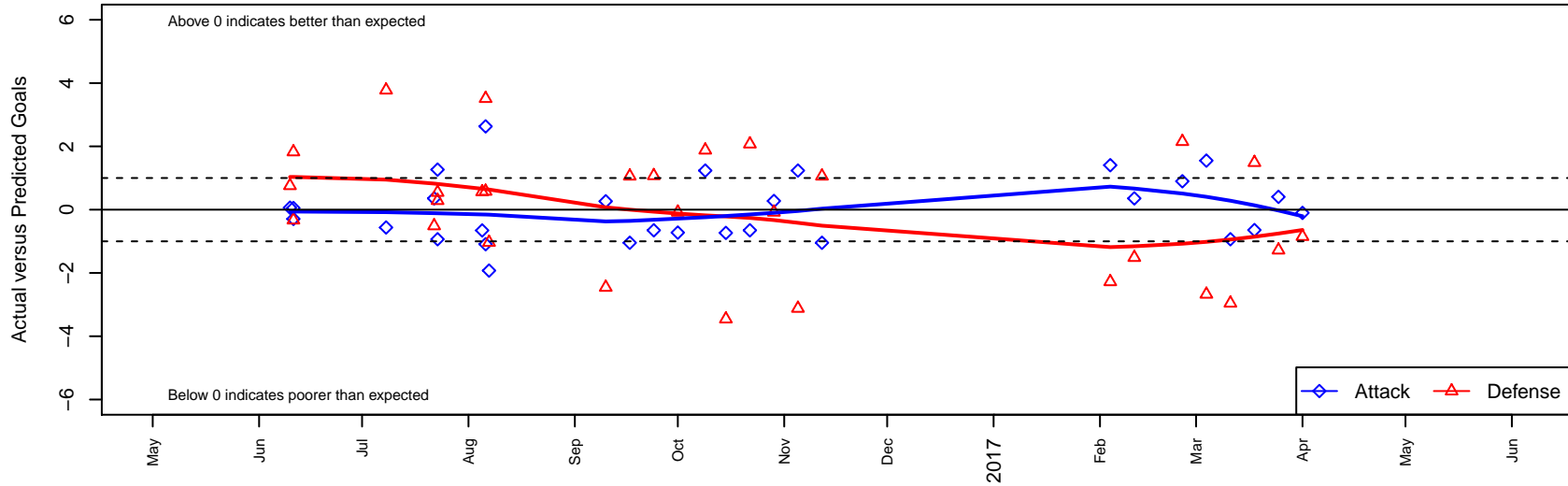
LWPFC White Sharks B04

Lake WA Premier FC
 Redmond, WA
 B04 total strength=731
 attack=1.26 defense=0.49
 fall league = PSPL WSPL 2 West U13
 spr league = Spr PSPL Classic 1 Blue U13

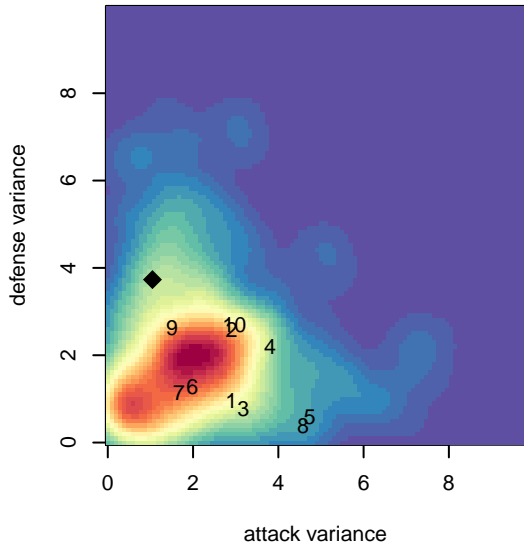
alt names used:
 LAKE WASHINGTON PREMIER FCLWPFC W
 LWPFC White Sharks
 LWPFC White Sharks

Venues played:
 2016 Starfire Spring Classic BU13 Gold
 2016 Gunners Invitational 2004 Silver
 2016 Sounders FC Cup BU13 Gold
 2016 Mt Hood Challenge U13 Silver
 2016 PSPL WSPL 2 West U13
 2016 Spr PSPL Classic 1 Blue U13

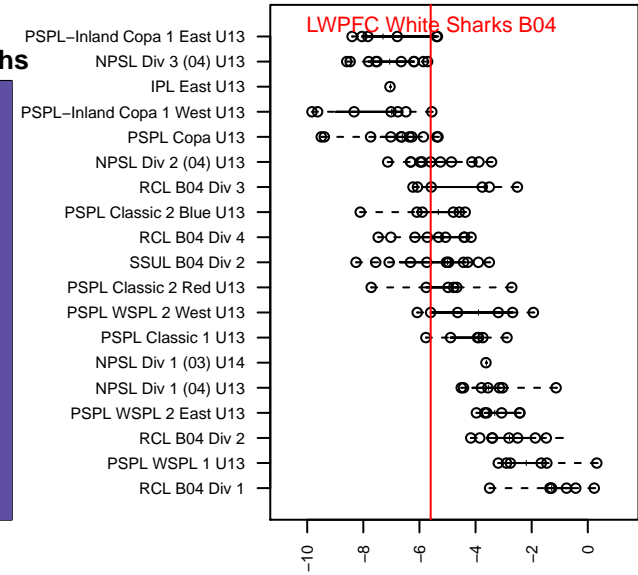
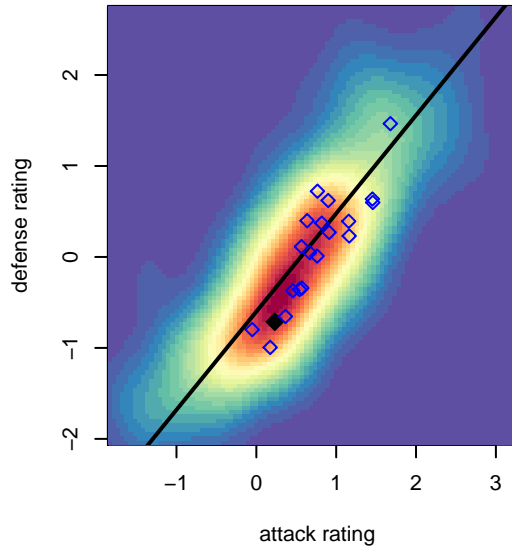
LWPFC White Sharks B04
 Dots are actual minus expected GF (blue circles) and GA (red triangles).
 Blue line is smoothed change in attack strength. Red is smoothed change in defense strength.



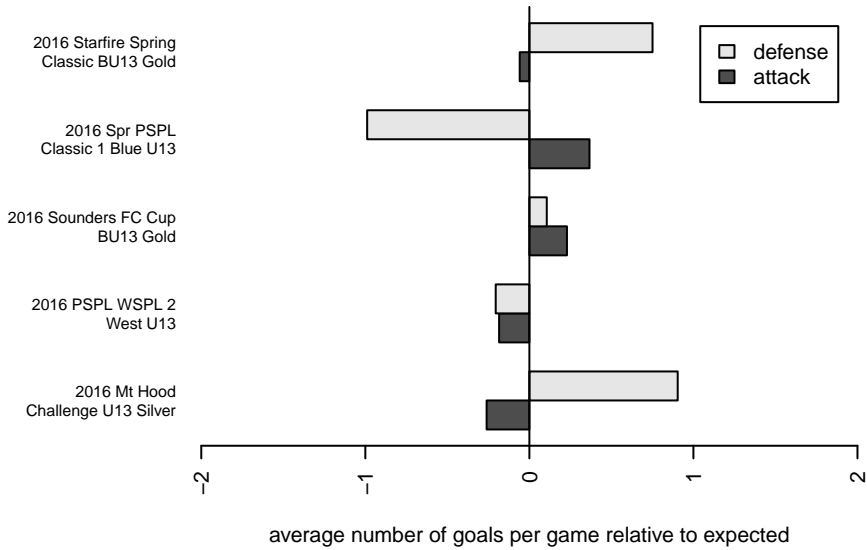
**attack and defense variance (black dot)
relative to other teams
and top 10 in region**



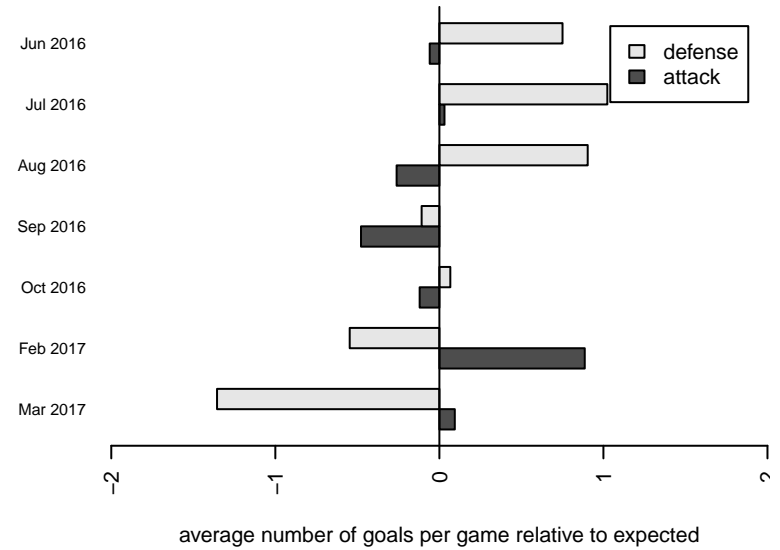
**attack and defense rating
relative to others at age
and all opponents in last 13 months**



Performance relative to 13 month average



Performance relative to 13 month average



date	home		away		venue	pred.home	pred.away
2017-04-01	Emerald City FC White B04	4	LWPFC White Sharks B04	1	2016 Spr PSPL Classic 1 Blue U13	3.15	1.10
2017-03-25	NC Alliance Red B04	4	LWPFC White Sharks B04	2	2016 Spr PSPL Classic 1 Blue U13	2.72	1.60
2017-03-18	LWPFC White Sharks B04	0	Liga Tlaxtli FC Guerreros B04	3	2016 Spr PSPL Classic 1 Blue U13	0.64	4.49
2017-03-11	Seattle Celtic Green B05	8	LWPFC White Sharks B04	0	2016 Spr PSPL Classic 1 Blue U13	5.04	0.93
2017-03-04	LWPFC White Sharks B04	3	NPSA Titans White B04	6	2016 Spr PSPL Classic 1 Blue U13	1.45	3.33
2017-02-25	LWPFC White Sharks B04	2	Emerald City FC White B04	1	2016 Spr PSPL Classic 1 Blue U13	1.10	3.15
2017-02-11	Liga Tlaxtli FC Guerreros B04	6	LWPFC White Sharks B04	1	2016 Spr PSPL Classic 1 Blue U13	4.49	0.64
2017-02-04	LWPFC White Sharks B04	3	NC Alliance Red B04	5	2016 Spr PSPL Classic 1 Blue U13	1.60	2.72
2016-11-12	Cascade FC Green B04	1	LWPFC White Sharks B04	2	2016 PSPL WSPL 2 West U13	2.06	3.05
2016-11-05	Monroe Cobras FC B04	6	LWPFC White Sharks B04	3	2016 PSPL WSPL 2 West U13	2.88	1.76
2016-10-29	LWPFC White Sharks B04	1	TC United Navy B04	6	2016 PSPL WSPL 2 West U13	0.73	5.92
2016-10-22	LWPFC White Sharks B04	0	Kent City White B04	6	2016 PSPL WSPL 2 West U13	0.65	8.07
2016-10-15	LWPFC White Sharks B04	0	Emerald City FC Green B04	8	2016 PSPL WSPL 2 West U13	0.73	4.54
2016-10-09	LWPFC White Sharks B04	3	Monroe Cobras FC B04	1	2016 PSPL WSPL 2 West U13	1.76	2.88
2016-10-01	TC United Navy B04	6	LWPFC White Sharks B04	0	2016 PSPL WSPL 2 West U13	5.92	0.73
2016-09-24	Kent City White B04	7	LWPFC White Sharks B04	0	2016 PSPL WSPL 2 West U13	8.07	0.65
2016-09-17	LWPFC White Sharks B04	2	Cascade FC Green B04	1	2016 PSPL WSPL 2 West U13	3.05	2.06
2016-09-10	Emerald City FC Green B04	7	LWPFC White Sharks B04	1	2016 PSPL WSPL 2 West U13	4.54	0.73
2016-08-07	LWPFC White Sharks B04	1	Bend FC Timbers White B04	3	2016 Mt Hood Challenge U13 Silver	2.92	1.97
2016-08-06	LWPFC White Sharks B04	4	SESC Dragons B04	0	2016 Mt Hood Challenge U13 Silver	1.37	3.51
2016-08-06	The Academy FC Red B04	2	LWPFC White Sharks B04	1	2016 Mt Hood Challenge U13 Silver	2.58	2.09
2016-08-05	Southside SC Azul B04	7	LWPFC White Sharks B04	0	2016 Mt Hood Challenge U13 Silver	7.56	0.66
2016-07-23	LWPFC White Sharks B04	0	Eastside FC Blue B04	3	2016 Sounders FC Cup BU13 Gold	0.93	3.29
2016-07-23	Emerald City FC Green B04	4	LWPFC White Sharks B04	2	2016 Sounders FC Cup BU13 Gold	4.54	0.73
2016-07-22	Liga Tlaxtli FC Guerreros B04	5	LWPFC White Sharks B04	1	2016 Sounders FC Cup BU13 Gold	4.49	0.64
2016-07-08	NPSA Titans Navy B04	0	LWPFC White Sharks B04	0	2016 Gunners Invitational 2004 Silver	3.78	0.56
2016-06-11	LWPFC White Sharks B04	1	BIFC Blue B04	2	2016 Starfire Spring Classic BU13 Gold	0.95	3.82
2016-06-11	LWPFC White Sharks B04	0	Coastal FC B04	11	2016 Starfire Spring Classic BU13 Gold	0.29	10.67

date	home		away		venue	pred.home	pred.away
2016-06-10	FC Edmonds Force B04	5	LWPFC White Sharks B04	1	2016 Starfire Spring Classic BU13 Gold	5.76	0.94